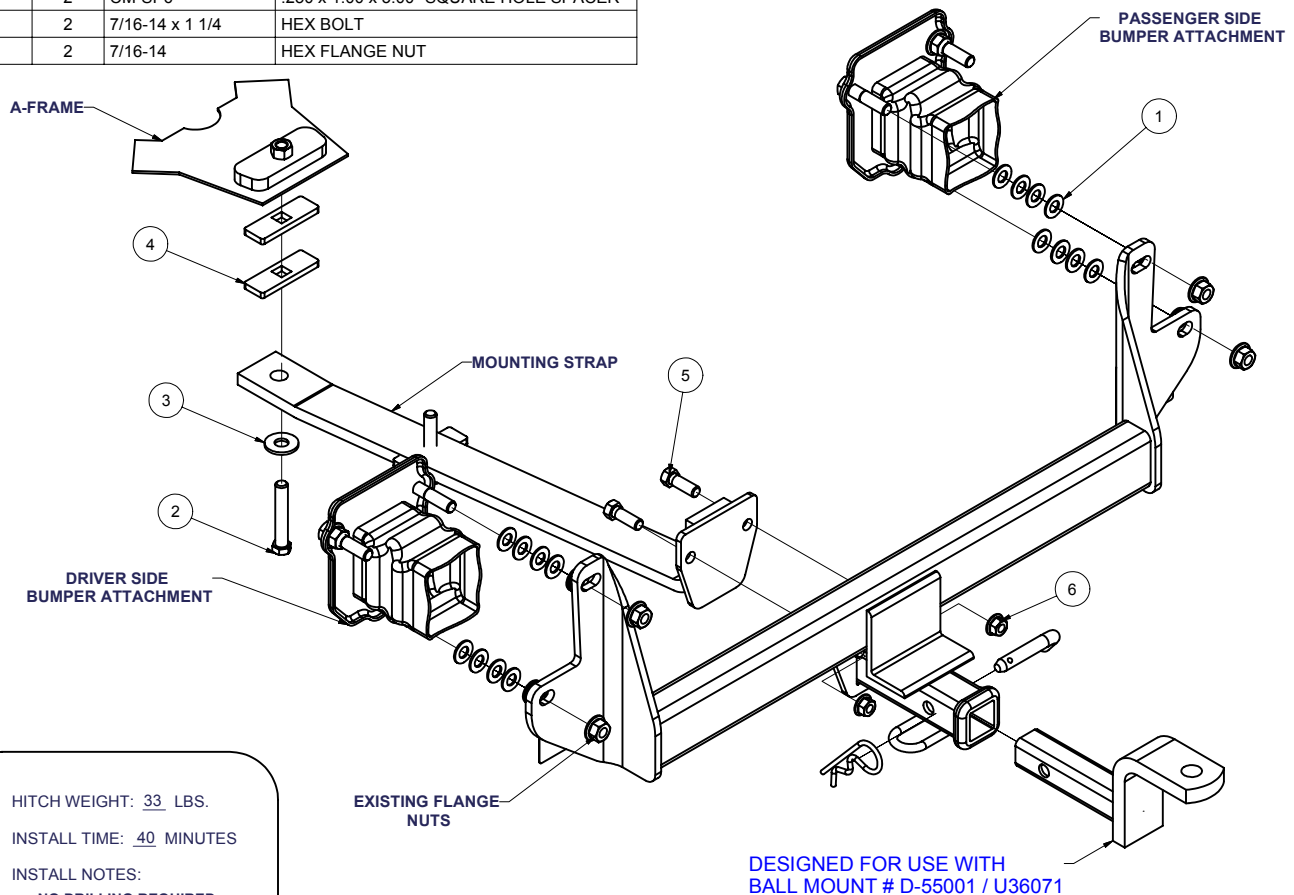


11771 / 24749 / 247771**BMW 325 xi WAGON**

7/2/2007

GROSS LOAD CAPACITY WHEN USED AS A WEIGHT CARRYING HITCH: 2000 LBS. TRAILER WEIGHT & 200 LBS. TONGUE WEIGHT.
*****DO NOT EXCEED VEHICLE MANUFACTURER'S RECOMMENDED TOWING CAPACITY.*****

Parts List			
ITEM	QTY	PART NUMBER	DESCRIPTION
1	16	7/16	WASHER
2	1	M12 - 1.50 x 70	HEX BOLT
3	1	1/2"	CONICAL TOOTHED WASHER
4	2	CM-SP6	.250 x 1.00 x 3.00" SQUARE HOLE SPACER
5	2	7/16-14 x 1 1/4	HEX BOLT
6	2	7/16-14	HEX FLANGE NUT

HITCH WEIGHT: 33 LBS.INSTALL TIME: 40 MINUTES

INSTALL NOTES:

NO DRILLING REQUIRED
 FASCIA TRIMMING MAY BE NECESSARY

INSTALLATION STEPS

- 1) Remove (14) fasteners securing two (2) underbody panels.
- 2) Remove four (4) 12mm nuts from the bumper attachments on both sides which will be reused in step # 3. Also remove a 12mm bolt from the A-frame and return it to the owner. Place (4) washers per stud between the bumper attachments and the hitch plates on both sides as shown.
- 3) Lift the hitch into position over studs and secure with existing flange nuts as shown.
- 4) Attach mounting strap to the hitch using 7/16" fasteners as shown.
- 5) Place two (2) spacers between the hitch and the A-frame, and secure with 12mm bolt and conical toothed washer as shown. Reinstall the lower body panel and trim the fascia as needed.
- 6) Torque all 12mm fasteners to 62 lb-ft, and all 7/16" fasteners to 50 lb-ft.

PERIODICALLY CHECK THIS RECEIVER HITCH TO ENSURE THAT ALL FASTENERS ARE TIGHT AND THAT ALL STRUCTURAL COMPONENTS ARE SOUND.

Curt Manufacturing Inc., warrants this product to be free of defects in material and/or workmanship at the time of retail purchase by the original purchaser. If the product is found to be defective, Curt Manufacturing Inc., may repair or replace the product, at their option, when the product is returned, prepaid, with proof of purchase. Alteration to, misuse of, or improper installation of this product voids the warranty. Curt Manufacturing Inc.'s liability is limited to repair or replacement of products found to be defective, and specifically excludes liability for incidental or consequential loss or damage.